

## High Accuracy and Cost-Effective Performance Across All Materials

Engineered for semi-finishing operations, the **DR-TWIST** tool line excels in interrupted cuts, angled entry drilling, and vibration-prone conditions, offering reliable burr-free results and an economical alternative for deep-cavity material removal.

**YOU**

MACHINING

INTELLIGENTLY?

1

Use Promo Code: **TU272**

### Purchase

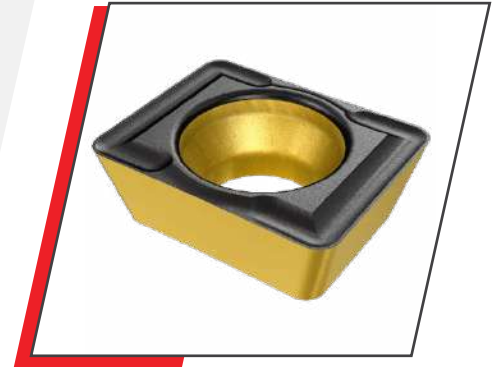
50 AOMT 04 or SOMX 05/06/07 or SOMT 09/12/16 inserts in same size - any assortment

### Receive

Corresponding DR...-N drill body up to 2"

### Free of Charge

The image shown is for representational purposes.



**High Feed Parting Tools**  
**Vibration Free**

Revolutionary quad blade and unique holder enable deeper parting with high feed rates. Guaranteed no vibration, high part straightness, and improved surface finish lead to material savings. A 160mm bar diameter can be cut with a 3mm insert.

**YOU**

MACHINING

**INTELLIGENTLY?**

**1 Use Promo Code: TU2621**

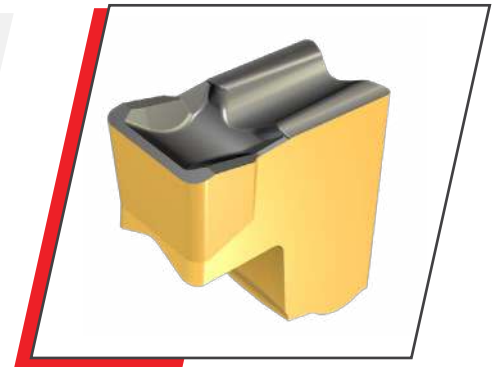
**Purchase**

20 TAG ... inserts from width 2-5mm in same size - any assortment

**Receive**

Corresponding JHP blades

**Free of Charge**



**2 Use Promo Code: TU2622**

**Purchase**

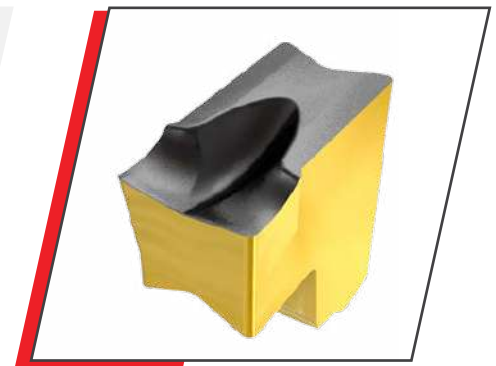
20 TAG...inserts from width 2-5mm + corresponding TGAQ blade in same size - any assortment

**Receive**

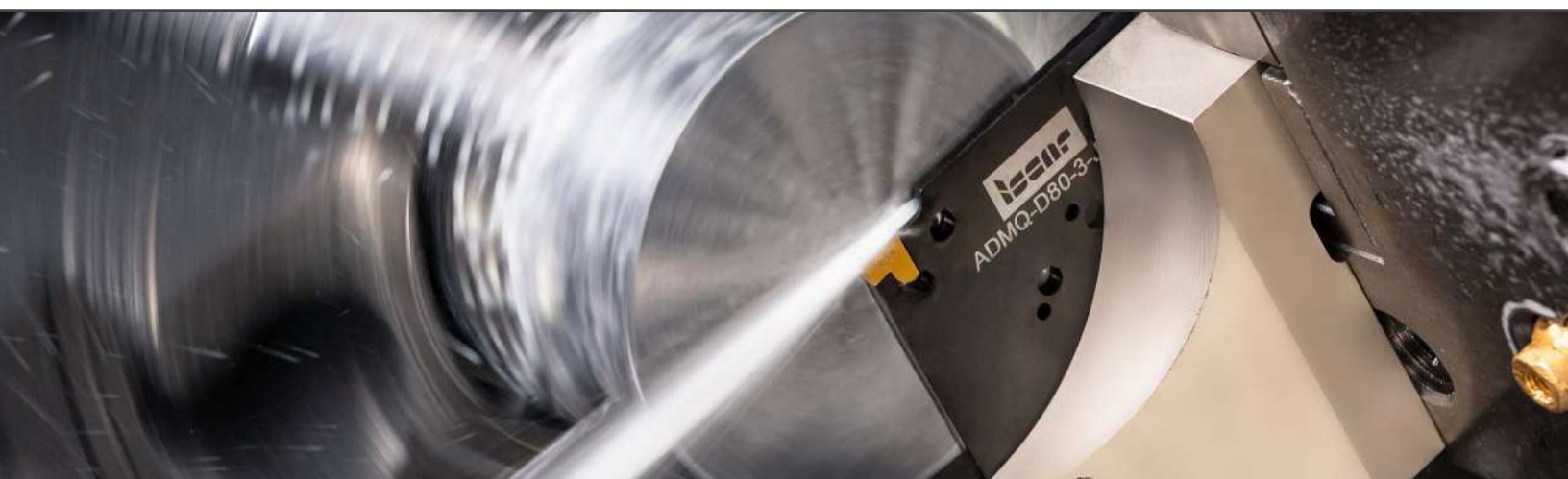
Corresponding TGAQ Block

**Free of Charge**

**SPECIAL OFFER**



The image shown is for representational purposes.



## New Generation Penta 24 Inserts & Tools for Grooving, Parting, and Light Turning

Intended for quick cutting-edge indexing and a safety lock clamping mechanism.

**YOU**

MACHINING

**INTELLIGENTLY?**

### 1 Use Promo Code: **TU274**

#### **Purchase**

10 PENTA 24...SL inserts from same size - any assortment

#### **Receive 50% Additional Discount**

on the corresponding PCHLR...JHP-MC/QC holder

### 2 **Purchase**

15 PENTA 24...SL inserts from same size - any assortment

#### **Receive**

Corresponding PCHLR...JHP-MC/QC holder

#### **Free of Charge**



The image shown is for representational purposes.



## Innovative 4 Cutting Edge Insert for Internal Grooving and Turning

Unique double-sided insert can be mounted on right and left hand tools. Rigid clamping provides high repeatability and accuracy. Internal pinpointed coolant directed to the cutting edge.

**YOU**

MACHINING

INTELLIGENTLY?



1

Use Promo Code: **TU275**

### Purchase

10 GQIN... inserts from same size widths 1-3mm

**Receive 50%**

**Additional Discount**

on the corresponding GQHINR/L... holder

2

### Purchase

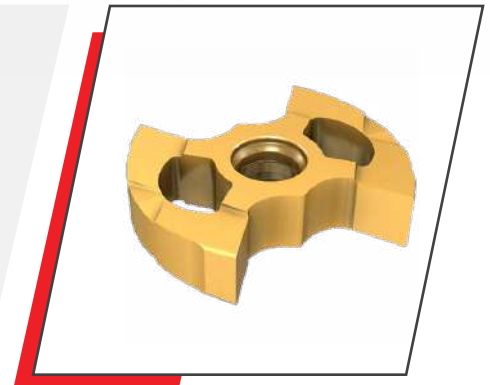
20 GQIN... inserts from same size widths 1-3mm

**Receive**

Corresponding GQHINR/L... holder

**Free of Charge**

**SPECIAL  
OFFER**



The image shown is for representational purposes.



## New Line of PICCO Inserts with Improved Cooling Supply

A new line of picco inserts with 2 coolant outlets for internal machining operations.

**YOU**

MACHINING

**INTELLIGENTLY?**

**1**

Use Promo Code: **TU276**

### Purchase

5 PICJ... Inserts - same size

**Receive 50% Additional Discount**

on the corresponding PICCO... double sided holder



**2**

### Purchase

10 PICJ... Inserts - same size

**Receive 50% Additional Discount**

on the corresponding PICCO ACE holder

**SPECIAL OFFER**



The image shown is for representational purposes.



## NEW 3 Cutting Edged Insert with SAFE-T-LOCK for Multi Directional and High Productivity Turning

Positive 3 cutting edge insert designed for lateral and profiling turning. The bottom insert is specifically designed with a safe lock mechanism that enables multi-directional turning machining. Safe lock clamping allows cutting on both sides of the insert, based on its V-shaped ribs and tool grooves.

**YOU**

MACHINING

**INTELLIGENTLY?**

**1**

Use Promo Code: **T2624**

### Purchase

20 Q3-MCMT16... inserts any assortment

**Receive 70%  
Additional Discount**

on the corresponding Q3-SMXCL/R holder\*

**2**

### Purchase

30 Q3-MCMT16... inserts any assortment

### Receive

Corresponding Q3-SMXCL/R holder\*

**Free of Charge**



\*Excludes Capto holders  
The image shown is for representational purposes.



## 6 Cutting Edge Turning Insert for Multi Directional Facing and Profiling Applications with **High Productivity**

Highly versatile insert used in all turning directions. Saves time and provides productivity gains with back-turning and a safety lock clamping mechanism.

**YOU**

MACHINING

**INTELLIGENTLY?**

**1**

Use Promo Code: **T2625**

### Purchase

20 Q6-MNMG12... inserts any assortment

**Receive 70% Additional Discount**

on the corresponding Q6-DMXNL/R holder\*

**2**

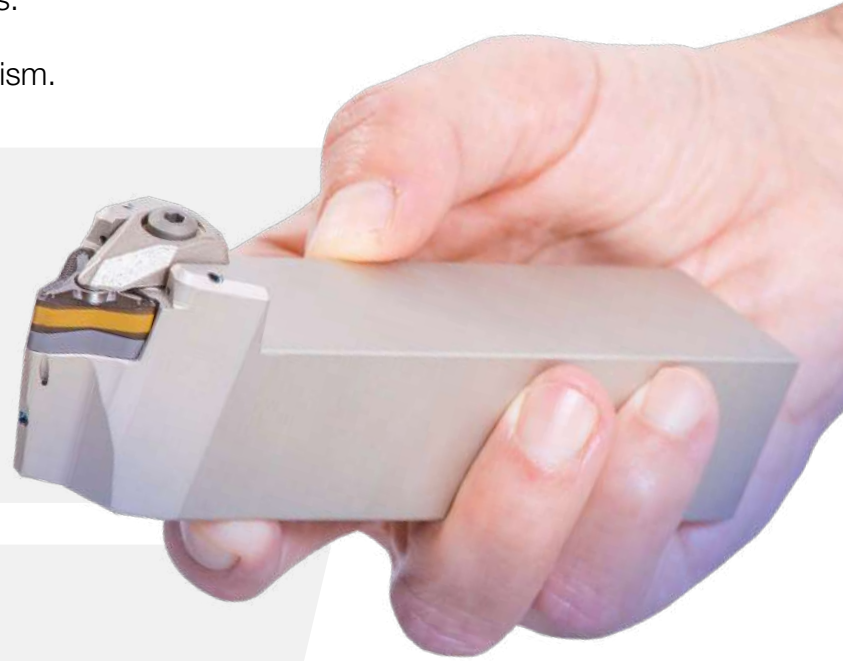
### Purchase

30 Q6-MNMG12... inserts any assortment

### Receive

Corresponding Q6-DMXNL/R... holder\*

**Free of Charge**



**SPECIAL OFFER**

\*Excludes Capto holders  
The image shown is for representational purposes.



## Double-Sided Insert with 4 Positive Cutting Edges

ISCAR offers new double-sided inserts with 4 unique cutting edges as an advantageous alternative to the conventional ISO standard positive inserts with 2 cutting edges.

**1** Use Promo Code: **T2626, T2627, T2628**

### Purchase

20 CXGG/MG 09.../12... or CXMU/GU 06...\*\* inserts in same size - any assortment

### Receive

Corresponding PCLXR/L...-09X/12X or SCLXL/R...-06 ... external holder

**Free of Charge**

**YOU**

MACHINING

**INTELLIGENTLY?**



**2** Purchase

30 CXGG/MG 09.../12... or CXMU/GU 06...\*\* inserts in same size - any assortment

### Receive

Corresponding A-PCLX/L/R -09X/12X or A-SCLXL/R... -06 ... internal holder

**Free of Charge**



\*\* T2626 = 06, T2627 = 09, T2628 = 12

The image shown is for representational purposes.



## Six Positive Cutting Edged Insert for Semi Finishing and Finishing Guarantees **Excellent Surface Quality**

Positive insert, easy soft cut, less cutting forces with low power consumption, reduces burrs on steel, stainless steel and titanium parts.

**YOU**

MACHINING

**INTELLIGENTLY?**

1

Use Promo Code: **T2629**

### **Purchase**

20 D6NMG 16 in any assortment

### **Receive**

**25% Additional discount**



The image shown is for representational purposes.

