

NEW

ARRIVALS

NITECORE®

NIT EDC09

Swivel Head 1600 Lumen Rechargeable EDC Flat Flashlight

- Max brightness of 1600 lumens with a max throw of 167 yards
- 102 degree swivel head for precise lighting
- 3 color temperature outputs: warm, neutral, and cool white
- USB-C rechargeable for easy charging

SALE \$98.50



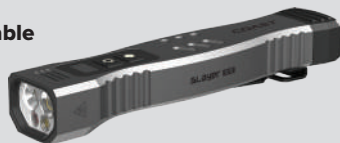
DUAL OPTIC LIGHTING SYSTEM WITH MULTI-MODE SPOT BEAM

COS 31366

Slayer Elite 1500 Lumens Rechargeable Laser and UV Flashlight

- Additional buttons for Laser and UV
- Integrated ZITHION rechargeable battery
- USB-C fast charging approximately 2 hours
- IP57 dust resistant and waterproof
- Backed by COAST lifetime warranty
- Lighting choice of regular, laser, or UV
- Modes: High, Low, Turbo cycled via power button

SALE \$140.50



COAST™
LIGHTS • KNIVES • MULTI-TOOLS



MC 53551

Automotive A/C Leak Testing Kit

- R134a and R1234yf Compatible with the inclusion of low side couplers and adapters for both A/C systems
- Durable Single-Stage High Pressure Regulator with 1/4" SAE flare outlet, T-handle and dual gauges
- Combustible Gas Leak Detector capable of detecting nitrogen-hydrogen tracer gas
- Heated Tin Oxide Gas Sensor with a response time of less than 1 second
- Pressure Testing with Nitrogen-Hydrogen Tracer Gas making it ideal for modern automotive leak testing without using refrigerant

SALE \$687.50



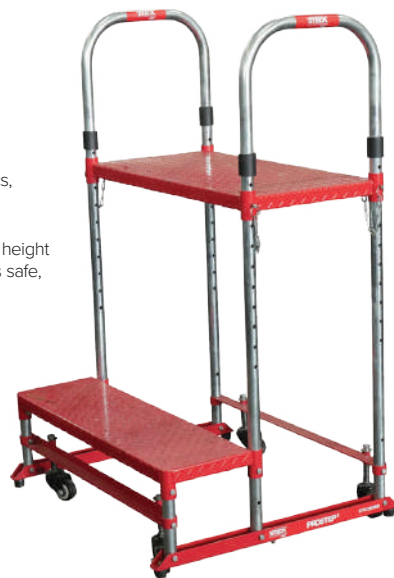
STK 20360

ProStep™ 2 Heavy-Duty Shop Step Platform

- Shop-Ready Construction – 53" height provides optimal elevation for diagnostics, brake, and suspension work
- Adjustable Steps for comfort and access
- Ergonomic Handle Design – 20" handle height with a 1.25" grip and 5.9" radius ensures safe, comfortable handling—even with gloves
- Compact Footprint – 29" base width fits easily between vehicles, lifts, and tool stations in crowded shop environments
- Mobility with Stability – Equipped with wheels for transport, yet stable enough to remain secure during use
- Slip-Resistant Steps – Diamond plate step surface delivers traction, reducing slip risks in oily or wet conditions

SHIPS MOTOR FREIGHT

SALE \$415.00



STK 32902-KIT

2 Pc. Big Easy GLO with Extender & Bag Kit

- Two Piece patented design for easy storage
- Big Easy Extend attachment provides an Additional 12" of reach! For a total of 67"
- Glow-in-the-dark, brighter white
- See at night or through tinted windows
- 55" long rod, with non-marring wedge and lock knob lifter and paint protector to reduce friction between the car door
- Includes inflatable Easy Wedge and Storage Bag

MADE IN THE **USA**

SALE \$181.00



PPR PPMWL1400

1400 Lumen Modular Work Light with Detachable LED Pods

- Can be used as an under-hood light, an Area Spot light, or four individual work lights
- The light can be mounted in multiple orientations for hands-free use by utilizing the magnets on the side or back of the housing, the threaded hole for mounting to a tripod or the magnets on the back of each individual module as well as the hooks on each module
- Module Lumens (High, Low) : 350, 125
- Total Light Lumens : 1400
- Runtime (High, Low): 3.5h, 10h
- Each light module has a magnet and a hook
- Can be mounted in multiple orientations

SALE \$450.00



SALE ENDS JANUARY 31, 2026

Not responsible for errors in printing or product color.

260131NP_ET

NEW

ARRIVALS

GEARWRENCH

GWR GWSMART05 5" Bidirectional Diagnostic Scanner

- Easy, portable diagnostics
- No subscription fees
- Two-year warranty

SALE \$543.80



GWR GWSCOPE 1080P HD Endoscope With Light USB C

- 1080p HD video
- 2MP camera
- Image + video capture
- Two-year warranty

SALE \$135.95



GWR GWSMART10 10" Bidirectional Diagnostic Scanner

- 51 reset & relearn functions
- Smart topology mapping
- Includes OBD1 + OBD2 (Tesla adapter available)
- 3 years of FREE subscription
- IDENTIFIX trial + exclusive discount
- Rapid-charging dock + carrying case included

SALE \$2,979.35



GWR GWTPMS TPMS Programming & Diagnostics Tool

- Dual-frequency TPMS reader (315MHz & 433MHz)
- Handles Sensor ID, Tire pressure, Temperature, and Battery status
- Reads & clears TPMS-related DTCs
- Lifetime software updates – FREE
- Available Sensors: GWTPMSM (Chrome) and GWTPMSR (Black)

SALE \$238.00



Valve TPMS Sensor

PART #	QTY	SALE
METAL		
GWR GWTPMSM	Single	\$36.40
GWR GWTPMSM4PK	4 Pack	\$112.50
GWR GWTPMSM20PK	20 Pack	\$484.30
RUBBER		
GWR GWTPMSR	Single	\$36.40
GWR GWTPMSR4PK	4 Pack	\$112.50
GWR GWTPMSR20PK	20 Pack	\$484.30



OPERATES OFF OF THE INDUCTOR® MAX OR PRO-MAX

IND U-611 LiI AI

- Save on labor and consumables
- Remove vinyl graphics and body trim
- Remove, Spray-On Bedliners
- Lightly heat treat (anneal) aluminum panels prior to repairs (PDR/GP)
- Remove moisture from panels prior to PDR/GP repairs

MADE IN THE **USA**

SALE \$866.75



FEATURES A 2MM FEMALE CONNECTION THAT FITS MOST STANDARD PROBES

SG 23600 Long Back Probe Set

- Includes two different colored sets of straight, 45°, and 90° stainless steel probes
- Probe lengths range from 7" – 8"
- Rated for up to 30 volts
- Compatible with our 21200 Clamp Probes

SALE \$40.85



STRONG MAGNETIC BASE WITH A 100 LB-RATED RARE EARTH MAGNET

STS STSPBPT Magnetic Base for Power Probe Butane Torch

- 3D-printed PETG housing for long-term shop use
- Stick to carts, toolboxes, lift arms, or workbenches

MADE IN THE **USA**

SALE \$23.00



SALE ENDS JANUARY 31, 2026

Not responsible for errors in printing or product color.

260131NP_ET