



My Toolbox

Inventory and Asset Management Solutions

Our Machines



<p>CL-264</p> <p>264 Unit Carousel</p> <hr/> <p>CL-320</p> <p>320 Unit Carousel</p> <hr/> <ul style="list-style-type: none"> • Great for an assortment of different Items • Built-In Card Reader for login. • Moderate Security <p>Good For</p> <ul style="list-style-type: none"> ✓ Job Shops ✓ Fabrication ✓ Automotive 	<p>L-12(S)</p> <p>12-unit Locker with or Without Screen</p> <hr/> <p>L-14(S)</p> <p>14-unit Locker with or Without Screen</p> <hr/> <p>L-20(S)</p> <p>20-unit Locker with or Without Screen</p> <hr/> <ul style="list-style-type: none"> • Great for large items as well as bulk vending • Moderate Security 	<p>NA-10</p> <p>10 Drawer Non-Automatic Cabinet</p> <hr/> <p>NA-8M</p> <p>8 Drawer Mini Non-Automatic Cabinet</p> <hr/> <p>A-8</p> <p>8 Drawer Automatic Cabinet</p> <hr/> <ul style="list-style-type: none"> • Great for regularly changing inventory • Low Security 	<p>LH-90</p> <p>90 Unit High Density Locker</p> <hr/> <p>LH-60</p> <p>60 Unit High Density Locker</p> <hr/> <ul style="list-style-type: none"> • Great A large assortment of smaller items • Bulk or Single Item Issuing • Moderate- High Security <p>Good For</p> <ul style="list-style-type: none"> ✓ Production ✓ Job Shops ✓ Fabrication ✓ Automotive 	<p>CM-100</p> <p>100 Unit Coil Machine</p> <hr/> <p>CM-60</p> <p>60 Unit Coil Machine</p> <hr/> <p>CM-60D</p> <p>60 Unit Double Coil Machine</p> <hr/> <ul style="list-style-type: none"> • High Capacity of small number of items. • High Security <p>Good For</p> <ul style="list-style-type: none"> ✓ Production
---	---	--	--	---



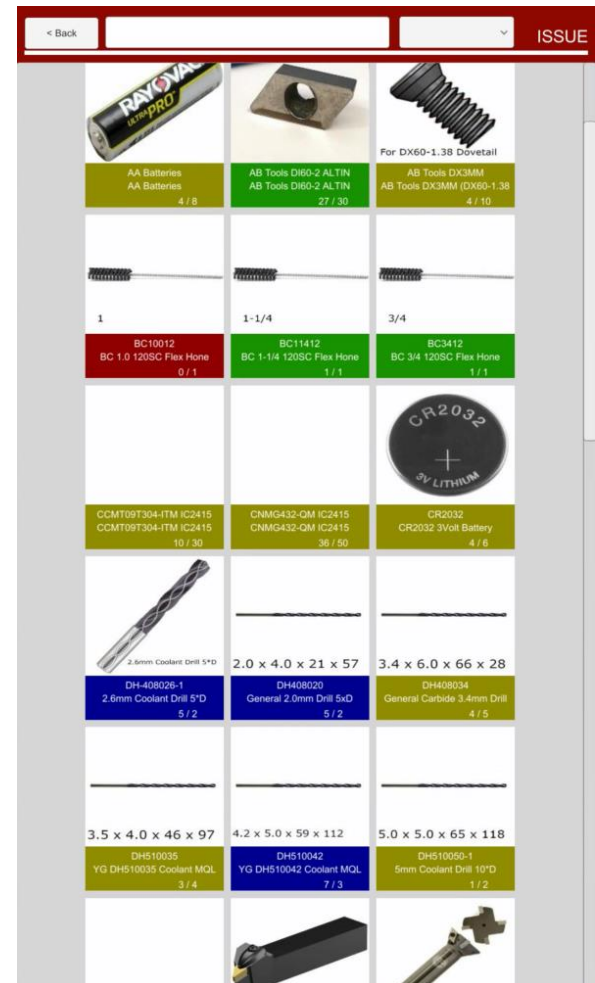
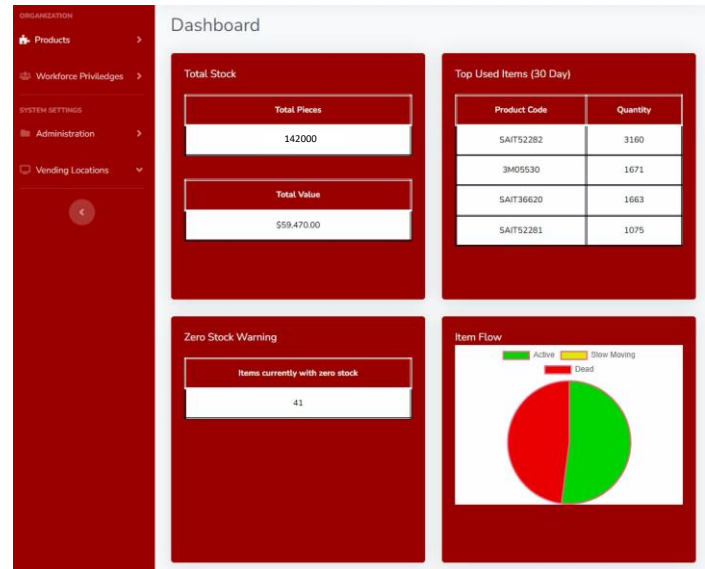
My Toolbox

Inventory and Asset Management Solutions

Our Software

Owners, Supervisors, and Managers

- Easily Manage your system from your computer.
 - Inventory
 - Add, Edit, Delete Items
 - Assign your own Categories to Items
 - Assign Suppliers of your choice to Items
 - See Active, Slow-Moving, and Dead Items
 - See Zero Stock Items
 - Investigate Transactions
 - See your Total Stock Quantity and Value
 - Set Minimum and Maximum Quantities
 - Users
 - Add, Edit, and Delete Users
 - Manage User Groups
 - Set Limitations
 - Reset Passwords
 - Change Access to different areas of My Toolbox
 - Inventory Locations
 - Build an unlimited number of Non-Automatic Areas
 - Assign Items to your locations.
 - Have multiple locations all within one Dashboard.
 - General
 - Very simple User Interface
 - No Licenses per computer
 - On-Site Database works even when the Internet does not



Regular Users

- Large Touch-Screen Monitors to easily find what you are looking for.
- Colors to identify what is low stock, running low, good stock and overstocked.
- Large Pictures to make the selection process easier.
- Search by Category, Keyword, or easily scroll through inventory.